

Façade Fire Test

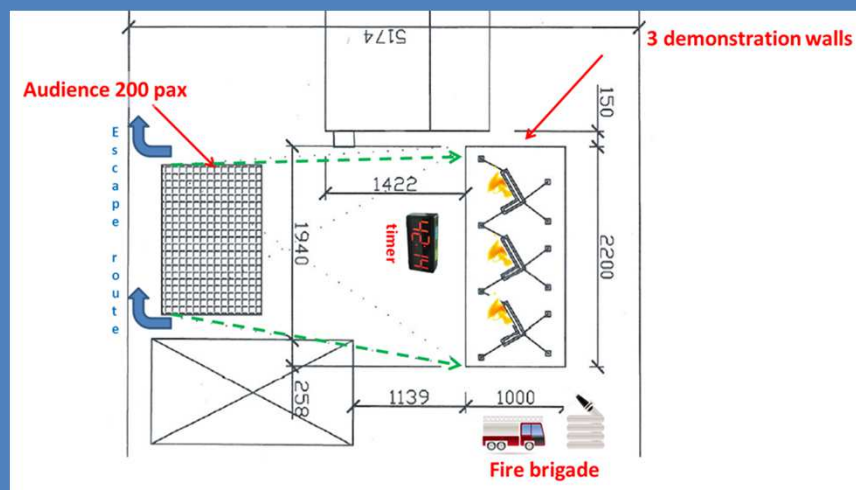


Façades in Fire Seminar



Zagreb, May 28 2014

Façade Fire Test



Façades in Fire Seminar





Zagreb, May 28 2014

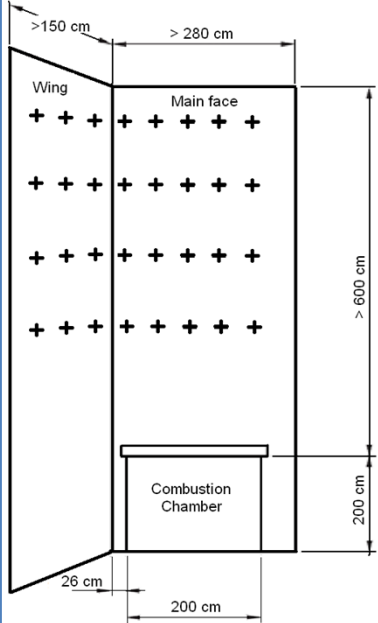
BS 8414-1 Fire performance of external cladding systems –
 Part 1: Test method for non-loadbearing external cladding systems applied to the face of the building

+ ADDITIONAL MEASUREMENTS

- Temperature,
- heat flux,
- IR thermography,
- weather conditions
- Load cells under the wood cribs

Façades in Fire Seminar   Zagreb, May 28 2014





- Temperature –
Type K thermocouples: 120 pcs,
plate thermometer: 12 pcs
- heat flux: 3 pcs,
- IR thermography: 2 cameras,
- Load cells: 12 pcs
- weather conditions
(temperature, humidity, wind
velocity and direction)

Façades in Fire Seminar

Zagreb, May 28 2014

ORDINANCE ON RESISTANCE TO FIRE AND OTHER REQUIREMENTS THAT MUST BE MET IN THE BUILDING IN CASE OF FIRE (OG 29/13)

Građevni dijelovi	Zgrada podskupine (ZPS)					
	ZPS 1	ZPS 2	ZPS 3	Visoke zgrade		
Ovješeni ventilirani elementi pročelje						
Klasificirani sustav	D	D-d1	D-d1	C-d1	B-d1	A2-d1
ili						
Izvedba sa slijedećim klasificiranim komponentama						
Vanjski sloj	D	D	D	A2-d1	B-d1	A2-d1
Podkonstrukcija						
– štapasta	D	D	D	D ili	D C ili	C A2
– točkasta	A2	A2	A2	A2	A2 A2	A2 A2
Izolacija	D	D	D	B	A2 B	A2 A2
Toplinski kontakti sustav pročelja						
Klasificirani sustav	D	D	D	C-d1	C-d1	A2-d1
ili						
Sastav slojeva sa slijedećim klasificiranim komponentama						
– pokrovni sloj	B-d1	B-d1	B-d1	B-d1	B-d1	A2-d1
– izolacijski sloj	E	E	D	B	A2	A2

Façades in Fire Seminar

Zagreb, May 28 2014

Façade Fire Test according to BS 8414-1



Measuring done by:



Tested ETICS systems:

B-s2,d0

A2-s1,d0

B-s2,d0 + MW barrier



Façades in Fire Seminar



Zagreb, May 28 2014